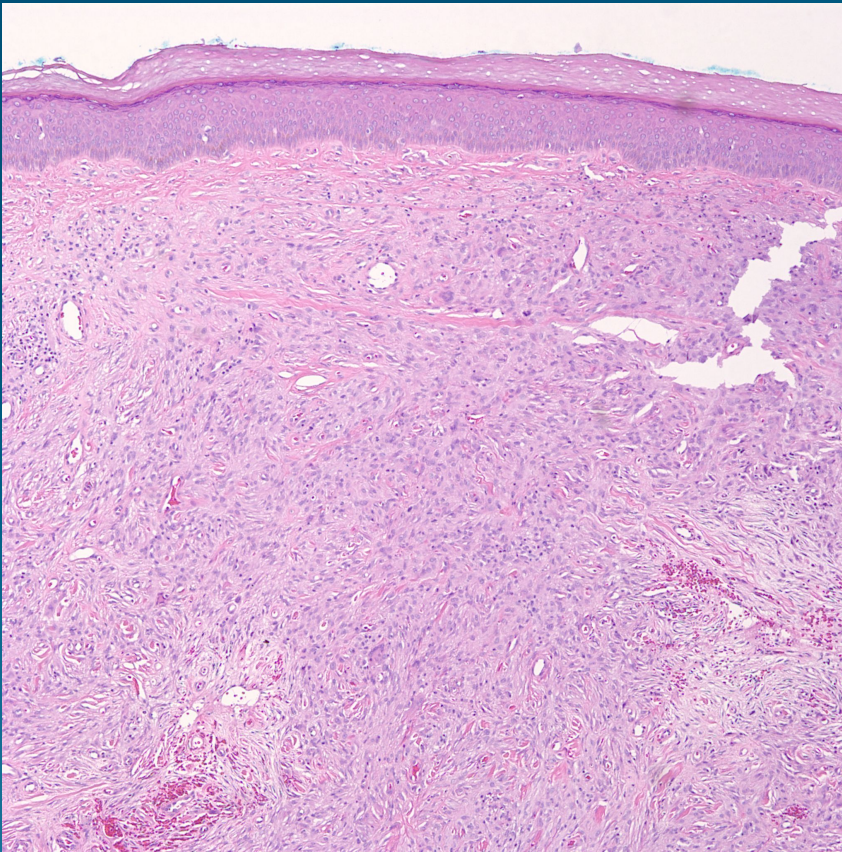


What is the best diagnosis?

- A. Granuloma annulare
- B. Sarcoidosis
- C. Juvenile Xanthogranuloma
- D. Langerhans cell histiocytosis
- E. Giant cell tumor of tendon sheath

Juvenile Xanthogranuloma

Pearls



- Diffuse nodular infiltrate of foamy histiocytes
- Grenz zone separates infiltrate from epidermis
- Bland cytology admixed with giant cells, many of the Touton type
- DDX: Dermatofibroma with xanthomatous change